

**8" Vacuum Assisted Wellpoint Pump
Model 8VAWP-HH-Dz4T-C10-F(W)**

Holland Pump Company
Corporate Office: 7312 Westport Place
West Palm Beach, FL 33413
USA
1-800-451-0769
www.hollandpump.com



Can be painted any color

The ideal pump for LARGE dewatering projects:

- Building excavations
- Long utility runs
- Wellpoint systems
- Sock underdrain
- High discharge pressure or long discharge pipe runs

Diesel Configuration:

Model 8VAWP-HH-Dz4T-C10-F(W)

Deutz TCD3.6 EPA Tier 4 Final liquid cooled turbo diesel engine, 100 cont. hp @ 1800 rpm
Full instrument panel with safety shutdowns

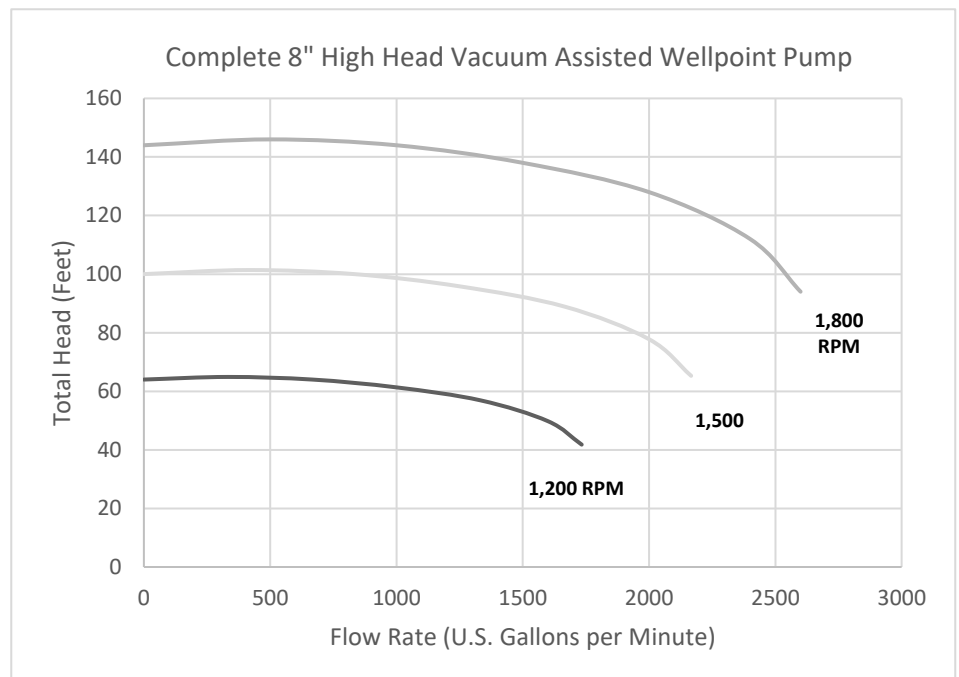
Electric Configuration:

Model 8VAWP-HH-E100-C10-F(W)

100 HP, 1800 rpm, 460 volt, 3 phase TEFC motor
124 FL Amps @ 460 volts, 1.15 SF
NEMA control panel with external disconnect, fuse block, magnetic contactor, adjustable overload

Specifications:

- 2600 GPM cast iron centrifugal pump
- 8" Suction x 8" Discharge
- up to 24' suction lift
- C10 vacuum pump, 200 cfm air handling
- Closed loop vacuum oil recovery system with heat exchanger
- Air/water separation tank with peeler valve assembly
- Integral fuel tank / frame, 124-gallons
- Single point lifting bale
- Optional: wheel mount with highway lights, fenders



**8" Vacuum Assisted Wellpoint Pump
Model 8VAWP-HH-Dz4T-C10-F(W)**

Holland Pump Company
Corporate Office: 7312 Westport Place
West Palm Beach, FL 33413
USA
1-800-451-0769
www.hollandpump.com

SPECIFICATIONS

(All specifications subject to change without notice)

Pump Component

Make: Complete Dewatering
Model: CW8, 8" end suction centrifugal,
long coupled
Casing: Cast Iron
Impeller: Enclosed 12.0", 6-vane, bronze
Seal: Double sintered bronze / steel
Seal Lubrication: Grease cup lubricated, run-dry
Coupling: Long coupled, doughnut type
elastomeric element
Suction, Discharge: 8" x 8" nominal straight pipe,
cam-lock or Bauer fittings optional

Performance:

Pumping Capacity:to 2600 gpm (9840 l/m)
Head Capacity:to 144' (43.9 m)
Suction Lift:to 24' (7.3 m)
Solids Capacity: to 1-1/8" spherical (2.9 cm)

Diesel Engine

Make / Model: Deutz TCD3.6L4 turbo diesel
Isuzu/John Deere/Kohler also available
Emissions: EPA Tier 4 Final
Type: 4-cylinder liquid cooled diesel
Horsepower: 100 hp continuous at 1800 rpm
Fuel Consumption: approx. 5.1 gph at full load
Control Panel: Murphy digital control panel with
engine rpm, oil pressure, coolant temperature,
voltage, hour meter, and electronic throttle control;
safety shutdowns on critical engine conditions
Fuel Filters: Dual fuel filter system with
fuel/water separator

Vacuum System

Vacuum Pump: Complete C10W-OF rotary vane
Air Handling: 200 cfm
(alternate; dual C5 vacuum pumps 260 cfm)
Lubrication: 12 gallons SAE 30 non-detergent
Cooling: Vacuum pump is liquid cooled;
vacuum oil is cooled using a closed loop oil recovery
system with heat exchanger
Vacuum System: Constant vacuum suction priming
system with a large steel air/water separation tank,
peeler valve float mechanism, manifold trap
moisture capture, and vacuum oil recovery tank
with demist element

Frame

Type: Integral fuel cell / frame,
welded steel construction
Material: 10" x 1/4" steel box tube,
welded and pressure tested
Fuel Capacity: 124 gallons (469 liters);
approx. 24 hours run time between refueling.
Can also be used with an auxiliary fuel tank.
Cleanout Ports: (4), one on each corner
Fuel Gauge: Mechanical dial
Fuel Filler: 4" filler neck with lockable cap,
sediment screen
Battery Hold-down: External, lockable bar
Lifting Bale: Single point, balanced
Paint: Epoxy primed and painted with
an industrial grade enamel. Custom colors
available

Wheel Mount Option

(includes DOT compliant Certificate of Origin)
Axle: Dual axle, 7000# rated
Torflex torsion axle.
Tires: 225/75/R15, Highway rated,
load range D
Fenders: Steel bolt on replaceable
Tow Hitch: To match your towing vehicle
(ball, pintle, lunette eye) with safety chains
Leveling: Three wind-down jacks - one
front tongue; two at rear corners
Brakes: Electric with battery backup

Dimensions

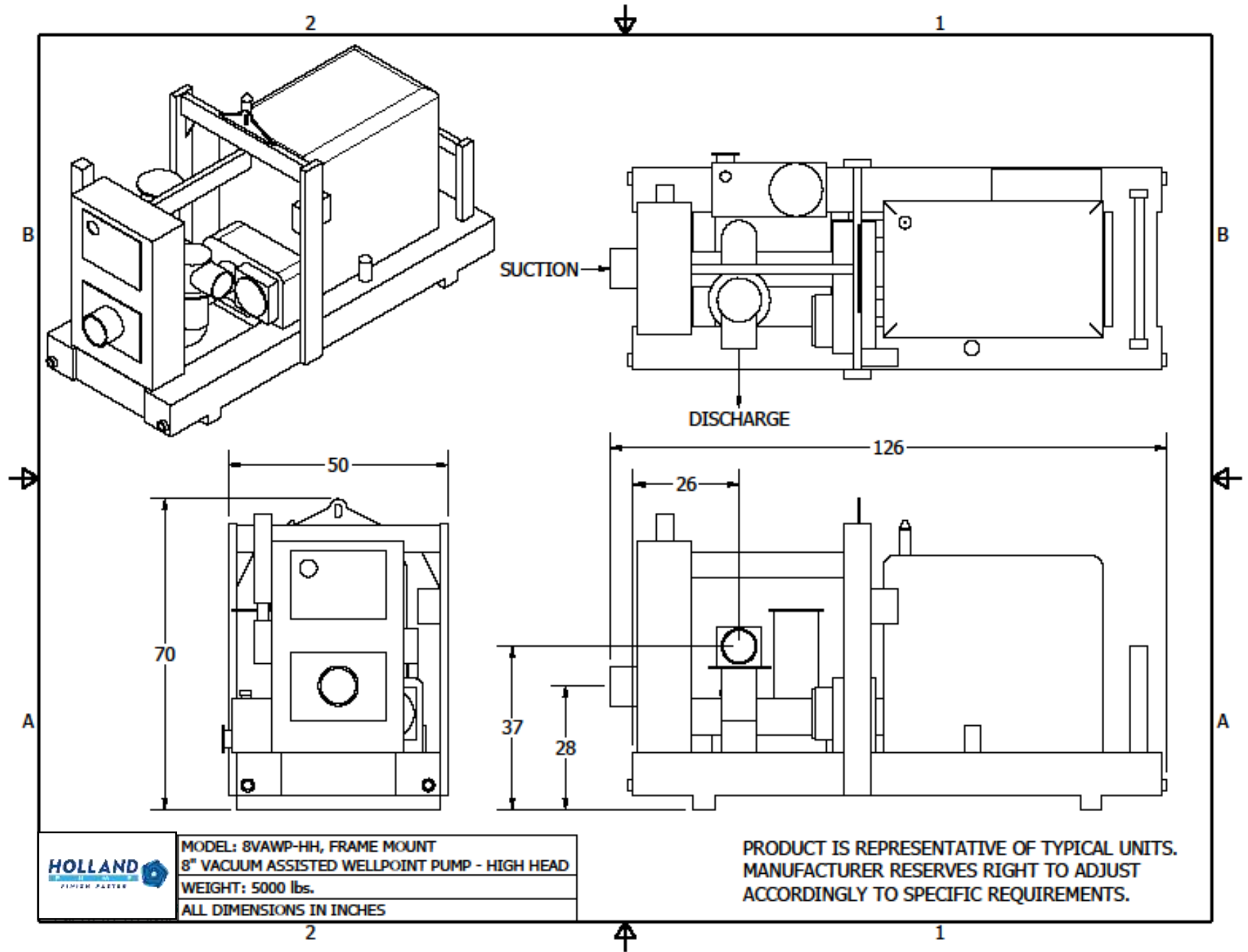
Frame Mount: Length 10.5' (126", 320 cm)
Width 4.2' (50", 127 cm)
Height 5.9' (70", 178 cm)
Weight 5000 lbs. (2275 kg)
Wheel Mount: Length 15.0' (180", 457 cm)
Width 6.7' (80", 204 cm)
Height 6.5' (78", 198 cm)
Weight 6200 lbs. (2820 kg)

Options

Increased fuel capacity
Vacuum pump upgrade
Sound attenuated full or partial enclosures

Warranty

Holland Pump warranties the entire unit for one-year parts
and labor against defects in product or workmanship. Engine
warranties are carried by the manufacturer and may exceed
one year.



MODEL: 8VAWP-HH, FRAME MOUNT
 8" VACUUM ASSISTED WELLPOINT PUMP - HIGH HEAD
 WEIGHT: 5000 lbs.
 ALL DIMENSIONS IN INCHES

PRODUCT IS REPRESENTATIVE OF TYPICAL UNITS.
 MANUFACTURER RESERVES RIGHT TO ADJUST
 ACCORDINGLY TO SPECIFIC REQUIREMENTS.

