

HOLLAND P U M P

© Copyright by Holland Pump Company 2003

Section: 40-30

9 Mar 05

Prime³ Vacuum Assisted Suction Pump
Model PT6TMS - 1104.44
Size 6" Trash, Materials, Sludge Pump

Holland® Pump Company
 Corporate Office: 7312 Westport Place
 West Palm Beach, FL 33413
 561-697-3333 • 1-888-997-PUMP (7867)
 sales@hollandpump.com

PUMP SPECIFICATIONS

Type/Model: Solids handling, lower head pump/Selwood S150

Volute: Fine gray cast iron, 6" suction, 6" discharge

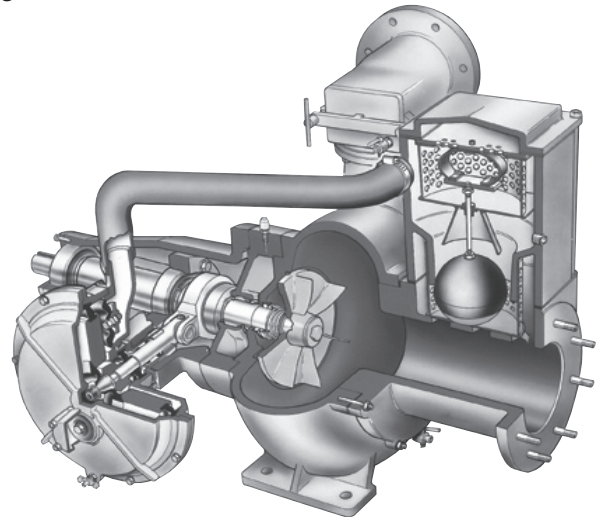
Impeller: 4 Vane Vortex, fine gray iron. Handles 4" compressible spherical solids

Priming System: Automatic dry priming and repriming system that features a 50 cfm water tolerant, diaphragm vacuum pump driven by the main drive shaft. Our major competitors use a 15 cfm compressor pump. There are no drive belts to adjust or replace or small compressor venturi to clog. The air/water separator is a simple, reliable float that opens and closes a nitrile peeler valve as water rises and falls. A non return valve isolates the pump during priming and protects against back flow

Bearings & Seals: Bearings of the vacuum pump drive and main shaft are continually bathed in oil. The spring loaded, single mechanical seal has a separate, oil filled housing that allows the pump to run drive indefinitely

Performance: Primes to depths of 30 feet below the center line of the pump in 1 minute

Optional Equipment: Twin priming for 100cfm priming power



ENGINE SPECIFICATIONS

Model: Perkins 1100 Series 1104.44

Type: 4 Cylinder, 4 Stroke, Naturally Aspirated, Liquid Cooled Diesel Engine

Displacement: 4.4L (268 cu.in.)

Governor: Mechanical

Lubrications: Forced Circulation

Air Cleaner: Dry Type with Replaceable Element

Lube Oil Capacity: 8.3 U.S. Quarts

Coolant Capacity: 4 U.S. Gallons

Fuel Tank: Integral 114 U.S. Gallon Capacity (#2 Diesel Fuel)

Full Load Operating Time: 60 Hours Minimum @ 2000 PSI

Starter: 12 Volt, 3.0 kW

Standard Features: Cast Iron Engine Block, Flywheel and Flywheel Housing, Ecoplus Oil and Fuel Filters, Glow Plug Starting Aid, Integral Inlet and Manifold, Gear Driven Coolant Pump, Cast Iron Exhaust Manifold with Center Side Outlet

Perkins Published Performance: Maximum Continuous Power: 83 BHP @ 2400 RPM

| PT6TMS @ 1800 RPM | Capacity of Pump in U.S. Gallons per Minute (gpm) @ Continuous Performance |
|----------------------|--|
| 80' Head | 600 |
| 70' Head | 925 |
| 50' Head | 1400 |



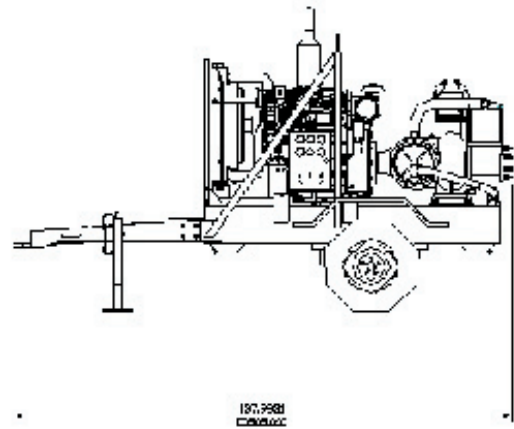
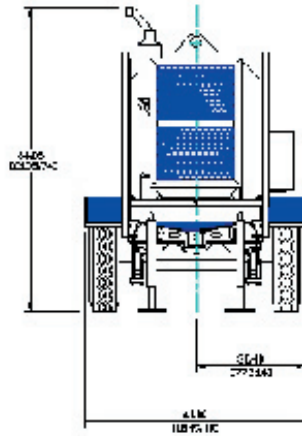
© Copyright by Holland Pump Company 2003

Prime³ Vacuum Assisted Suction Pump
Model PT6TMS - 1104.44
Size 6" Trash, Materials, Sludge Pump

Holland® Pump Company
Corporate Office: 7312 Westport Place
West Palm Beach, FL 33413
561-697-3333 • 1-888-997-PUMP (7867)
sales@hollandpump.com

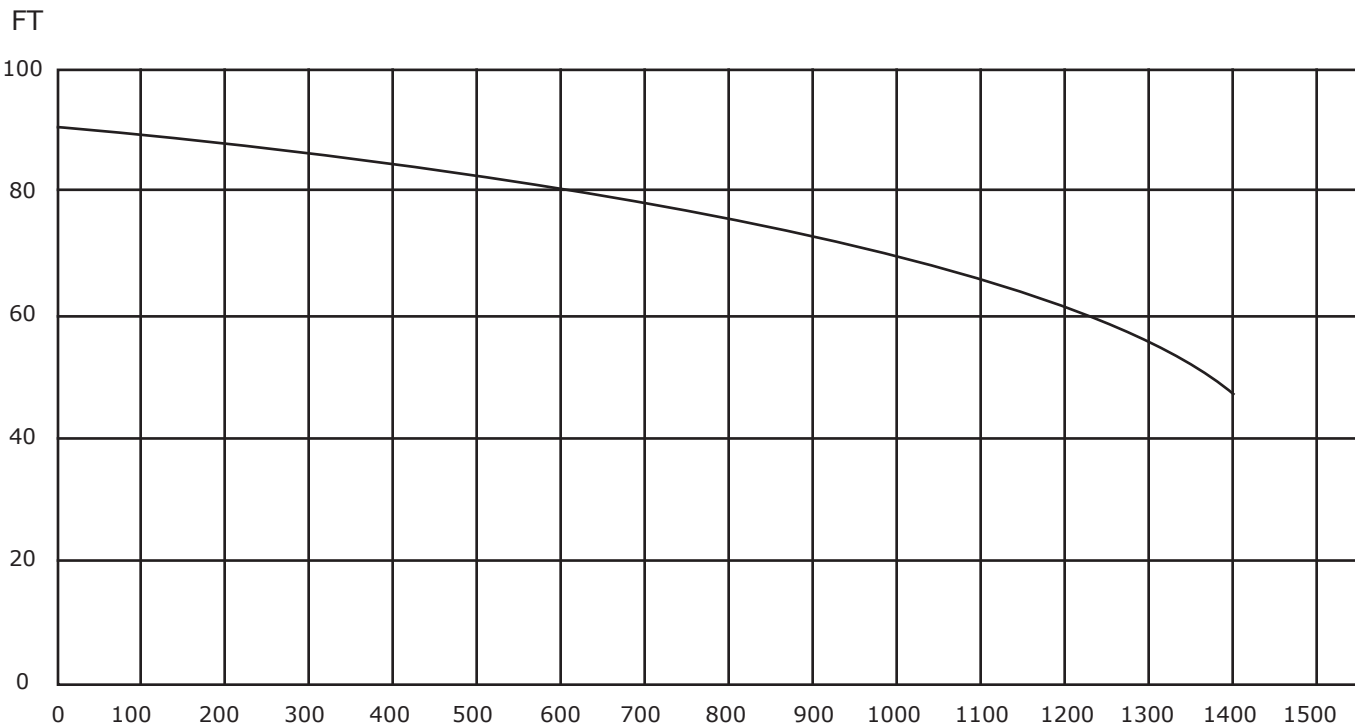
Approximate Dimensions
Powered by Perkins 1104.44 Diesel Engine

| | Skid Base | DOT Trailer |
|----------------------------|-----------|-------------|
| Net Weight (lbs) | 3310 | 3910 |
| Shipping Weight (lbs) | 3460 | N/A |
| Export Crate Size (cu. ft) | 247 | N/A |



Performance Curve Model: PT6TMS - 1104.44
Size: 6" Trash, Materials, Sludge Pump

TOTAL HEAD



U.S. Gallons Per Minute (GPM)