

HOLLAND

P U M P

© Copyright by Holland Pump Company 2003

Section: 30-35
26 June 06

8" Hydraulically Driven Submersible System
Model H8TP - P1104C44
Size 8" Trash Pump

Holland® Pump Company
Corporate Office: 2610 Sidney Lanier Drive
Brunswick, Georgia 31525
Phone 912-466-0304
1-888-997-PUMP
www.hollandpump.com

PUMP SPECIFICATIONS

Size: 8" Trash Pump

Volute: Fabricated Steel (optional stainless steel and special abrasion resistant steel volutes are available)

Impeller: Semi-open, 3 Vane. Handles 4" diameter compressible spherical solids.

Impeller Shaft: Stainless steel

Seal: Rotary Mechanical, oil-lubricated, carbon & ceramic

Hydraulic System

Hydraulic Reservoir level: 50 gallon capacity with twin 10 micron spin on oil filter

Biodegradable Oil: Furnished standard (optional petroleum based hydraulic oil available)

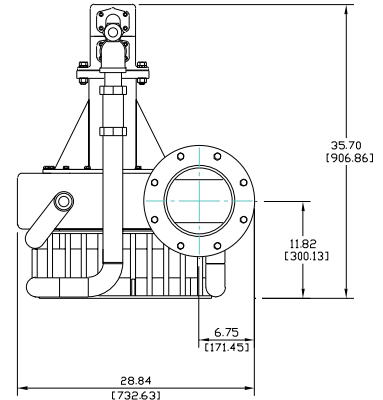
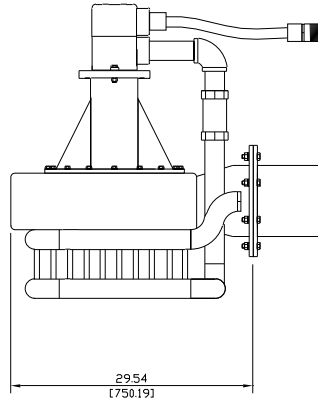
Hydraulic Pump: Denison vane type positive displacement pump with pilot operated Denison relief valve

Hydraulic Motor: Vickers vane type positive displacement motor

Heat Exchanger: Double row, SCH 40 pipe with integral intake basket (optional engine mounted oil cooler available)

Hydraulic Hose: 50' set of SAE 100R2, two wire braid high-pressure hose

Pump Head Pressure Relief System: Available as option to protect system against improper connection or interruption of hydraulic oil flow from pump head to power unit



Holland 8" Trash Pump

ENGINE SPECIFICATIONS

Model: Perkins 1100 Series 1104C-44

Type: 4 Cylinder, 4 Stroke, Naturally Aspirated, Liquid Cooled Diesel Engine

Displacement: 4.4L (268 cu.in.)

Governor: Mechanical

Lubrications: Forced Circulation

Air Cleaner: Dry Type with Replaceable Element

Lube Oil Capacity: 8.3 U.S. Quarts

Coolant Capacity: 4 U.S. Gallons

Fuel Tank: Integral 114 U.S. Gallon Capacity (#2 Diesel Fuel)

Full Load Operating Time: 60 Hours Minimum @ 2000 PSI

Starter: 12 Volt, 3.0 kW

Standard Features: Cast Iron Engine Block, Flywheel and Flywheel Housing, Ecoplus Oil and Fuel Filters, Glow Plug Starting Aid, Integral Inlet and Manifold, Gear Driven Coolant Pump, Cast Iron Exhaust Manifold with Center Side Outlet

Optional Features: Auto-Oiler with Engine Oil Shutdown, Site or DOT Highway Trailer, Automatic Remote Start and Stop, HANS (Holland Automatic Notification System), Full Instrument Package Covering: Air Filter, Fuel Filter, RPM, Radiator Coolant Level, Fuel Level

Perkins Published Performance: Maximum Continuous Power: 83 BHP @ 2400 RPM

H8TP @ 2000 PSI	Capacity of Pump in U.S. Gallons per Minute (gpm) (Continuous Performance)
20' Head	2450
10' Head	2700

Specifications subject to change without notice



© Copyright by Holland Pump Company 2003

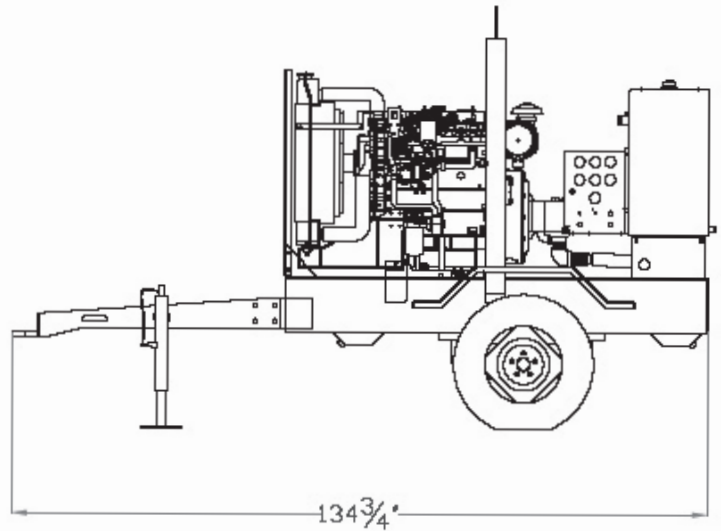
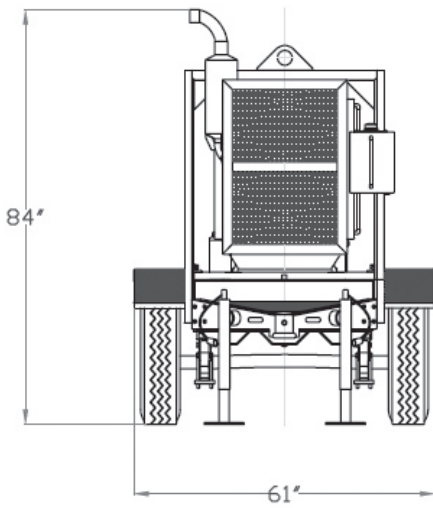
8" Hydraulically Driven Submersible System
Model H8TP - P1104C44
Size 8" Trash Pump

Holland® Pump Company
Corporate Office: 2610 Sidney Lanier Drive
Brunswick, Georgia 31525
Phone 912-466-0304
1-888-997-PUMP
www.hollandpump.com

Approximate Dimensions

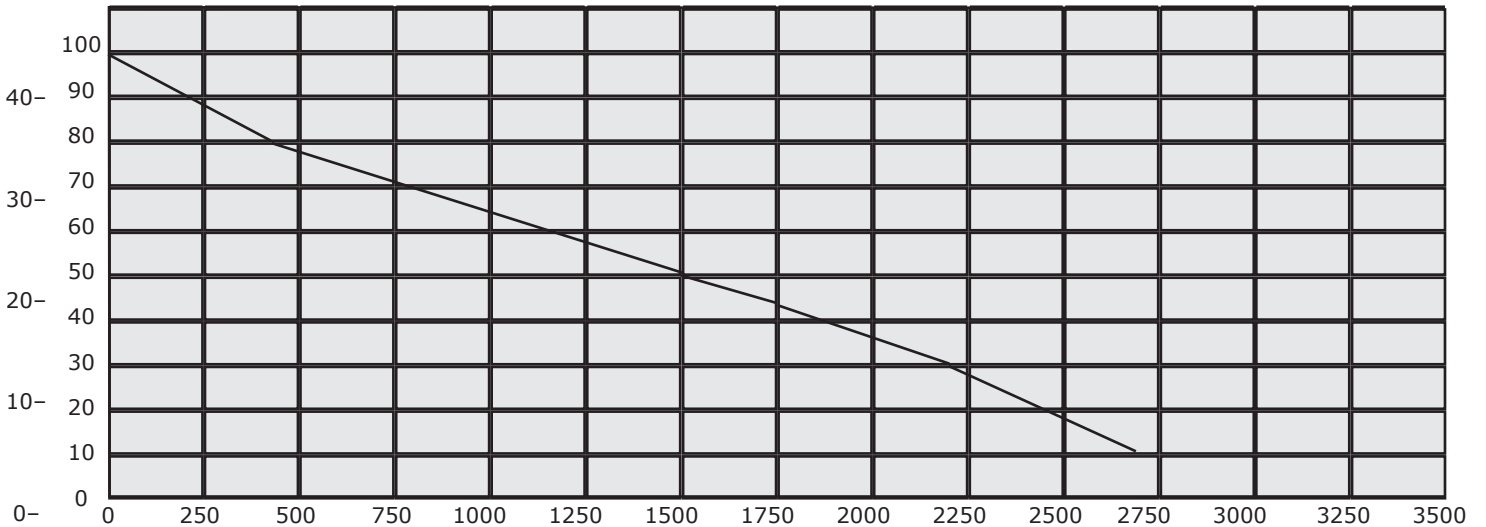
Powered by Perkins 1104C-44 Diesel Engine
Single Axle Trailer Shown

	Skid Base	DOT Trailer	Pump
Net Weight (lbs)	2568	2968	528
Shipping Weight (lbs)	N/A	N/A	N/A
Export Crate Size (cu. ft)	198	N/A	19



TOTAL HEAD
PSI FT

Performance Curve Model: H8TP - P1104C44
Size: 8" Trash Pump



U.S. Gallons Per Minute (GPM) @ 2000 PSI