

8" Jet Pump  
Model J8-6068HF485  
Size 8" Jet Pump

Holland Pump Company  
Corporate Office: 7312 Westport Place  
West Palm Beach, FL 33413  
1-800-451-0769  
www.hollandpump.com

**PUMP SPECIFICATIONS**

**Type/Model:** Clear Liquids® High-Pressure Cornell 5HH-EM18  
**Volute:** Cast iron ASTM A48, Class 30 Grey Iron  
**Flanges:** 8" Suction, 6" Discharge  
**Impeller:** Enclosed 6 Vane, 16.38" Bronze for Clear Liquid  
**Solids:** 1" diameter compressible spherical solids  
**Shaft Sleeve:** Heat Treated 416 Stainless Steel  
**Wear Rings:** Replaceable Bronze SAE 660 (Double Wear Rings available)  
**Sealing Arrangement:** Packing  
**Discharge valve:** Swingflex Val-Matic or equal  
**Bearings:** Heavy duty, grease lubricated, deep groove ball bearings, with a minimum of 50,000 hours bearing life  
**Priming:** Manual Protec Hand Primer #9  
**Optional Seals:** Mechanical seal - Carbon ceramic or Tungsten Carbide, also available is Cycloseal run-dry seal arrangement  
**Optional Features:** 50 CFM Maximum **PRIME<sup>3</sup>** automatic priming system, discharge valve Val-matic or equal



J8-D6068HF485				Shutoff Head: 340 feet		
Flow (GPM)	Speed (RPM)	TDH (ft)	PSI	Pump Efficiency (%)	Power (hp)	Max Suction Head (ft)*
2520	1910	266	115	84	201	12.7
2100**	1910	300	130	86	186	17.3
1680	1910	325	141	84	184	20.6
1260	1910	338	146	78	138	22.6
840	1910	342	148	64	113	23.8

\*Max Suction Head is suction lift plus friction losses without risk of suction cavitation  
 \*\*Best Efficiency Point

**ENGINE SPECIFICATIONS**

**Model:** Deere 6068HF485, Tier 3  
**Type:** 6 Cylinder, 4 Stroke, Charge Air, Liquid Cooled Diesel Engine  
**Displacement:** 6.8 L (415 cu.in.)  
**Type:** Electronic  
**Air Cleaner:** Dry Type with Replaceable Element  
**Lube Oil Capacity:** 5 U.S. gal (18.9L)  
**Coolant Capacity:** 3.25 U.S. gal (12.3L)  
**Cams:** Dual Overhead Cam Shaft  
**Starter:** 12 Volt **Fuel Tank:** 295 Gallons  
**Standard Features:** Skid, Murphy Powerview control panel: Oil Pressure, Engine Temp, RPM, Hour Meter, Load, Engine Code Diagnostics  
**Optional Features:** Site or DOT Highway Trailer, Auto-Start/Stop, HANS (Holland Automatic Notification System)  
**Coupling:** Stromag coupling

**John Deere Published Performance:**

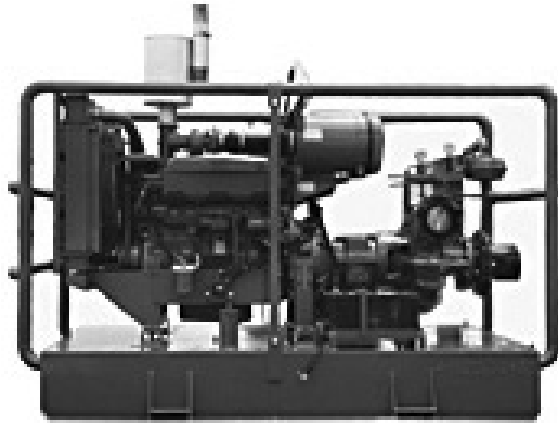
Maximum Continuous Horsepower: 225 BHP(168 kW)@ 2400 RPM, 203 BHP (151 kW)@ 1800 RPM



Holland Pump Company  
Corporate Office: 7312 Westport Place  
West Palm Beach, FL 33413  
1-800-451-0769  
www.hollandpump.com

8" Jet Pump  
Model J8-6068HF485  
Size 8" Jet Pump

Approximate Dimensions  
Powered by Deere 6090HF485 Diesel Engine  
Skid Weight: 7,000 lbs.



Performance Curve Model: J8-D6068HF485  
Size: 8" Jet Pump

