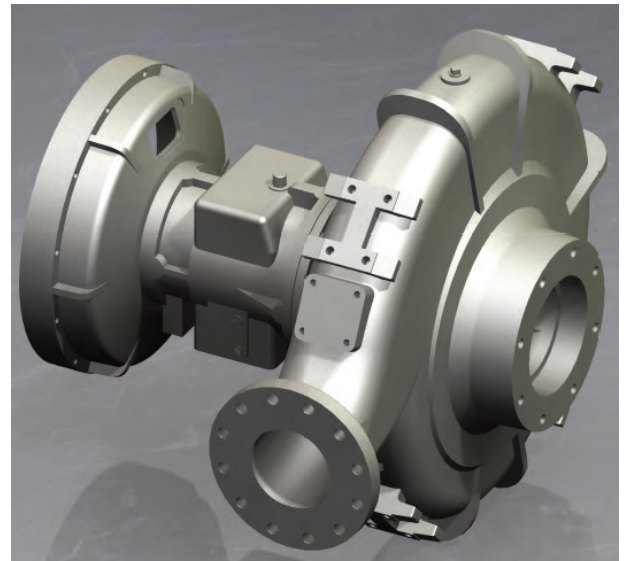


6" Jet Pump  
Model J6 - D6068HF285  
Size 6" Jet Pump

Holland Pump Company  
Corporate Office: 7312 Westport Place  
West Palm Beach, FL 33413  
1-800-451-0769  
www.hollandpump.com

**PUMP SPECIFICATIONS**

**Type/Model:** Clear Liquids® High-Pressure Cornell 4HH-EM16  
**Volute:** Cast iron ASTM A48, Class 30 Grey Iron  
**Flanges:** 6" Suction , 4" Discharge  
**Impeller:** Enclosed 6 Vane, 15.22" Bronze for Clear Liquid  
**Solids:** .62" diameter compressible spherical solids  
**Shaft Sleeve:** Heat Treated 416 Stainless Steel  
**Wear Rings:** Replaceable Bronze SAE 660 (Double Wear Rings available)  
**Sealing Arrangement:** Packing  
**Bearings:** Heavy duty, grease lubricated, deep groove ball bearings, with a minimum of 50,000 hours bearing life  
**Priming:** Manual Protec #9  
**Optional Seals:** Mechanical seal - Carbon ceramic or Tungsten Carbide, also available is Cycloseal run-dry seal arrangement  
**Optional Features:** 50 CFM Maximum **PRIME**® automatic priming system, discharge valve Val-matic or equal



J6-D6068HF285				Shutoff Head: 386 feet		
Flow (GPM)	Speed (RPM)	TDH (ft)	PSI	Pump Efficiency (%)	Power (hp)	Max Suction Head (ft) *
1300**	2200	337	146	81	136	16.9
1040	2200	358	155	77	121	22.4
780	2200	373	161	71	104	25.6
520	2200	381	165	61	82.5	26.0

\*Max Suction Head is suction lift plus friction losses without risk of suction cavitation  
 \*\*Best Efficiency Point

**ENGINE SPECIFICATIONS**

**Model:** John Deere 6068HF285 Tier 3  
**Type:** 6 Cylinder, 4 Stroke, Turbocharged, Liquid Cooled Diesel Engine  
**Displacement:** 6.8 L (415 cu.in.)  
**Governor:** Electronic  
**Lubrication:** Forced Circulation  
**Air Cleaner:** Dry Type with Replaceable Element  
**Lube Oil Capacity:** 5 U.S. gal (18.9L)  
**Coolant Capacity:** 3.25 U.S. gal (12.3L)  
**Fuel Tank:** Integral 240 U.S. Gallon Capacity (#2 Diesel Fuel)  
**Full Load Operating Time:** 60 Hours Minimum  
**Starter:** 12 Volt  
**Standard Features:** Cast Iron Engine Block, Ecoplus Oil and Fuel Filters, Glow Plug, Starting Aid, Integral Inlet and Manifold, Gear Driven Coolant Pump, Cast Iron Exhaust Manifold with Center Side Outlet, Murphy Powerflow control panel: Oil Pressure, Engine Temp, RPM, Hour Meter, Load, Engine Code Diagnostics  
**Optional Features:** Site or DOT Highway Trailer, Automatic Remote Start and Stop, HANS (Holland Automatic Notification System)  
**Coupling:** Stromag coupling

**John Deere Published Performance:**

Maximum Continuous Power: 139 BHP (104kW) @ 2200 RPM, Peak Power: 140 BHP (105kW) @ 2000 RPM



Holland Pump Company  
Corporate Office: 7312 Westport Place  
West Palm Beach, FL 33413  
1-800-451-0769  
www.hollandpump.com

6" Jet Pump  
Model J6 - D6068HF285  
Size 6" Jet Pump

Approximate Dimensions  
Powered by Deere 6068HF285 Diesel Engine  
Skid Weight: 6,000 lbs.



Performance Curve Model: J6 - D6068HF285  
Size: 6" Jet Pump

